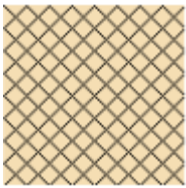


Skew to a Block using Skew 2

Make a design fit nicely into an irregularly shaped block on your quilt by creating the area using multiple Multi Points.

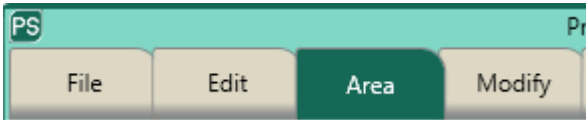
1. Select Design

- Select **File** tab.
- Press **Design**.
- Press **Open**.
- Select **Designs/HQ Designs/Blocks/Crosshatch Square**

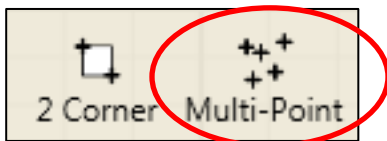


2. Create an Area

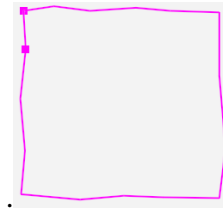
- Select **Area** tab.



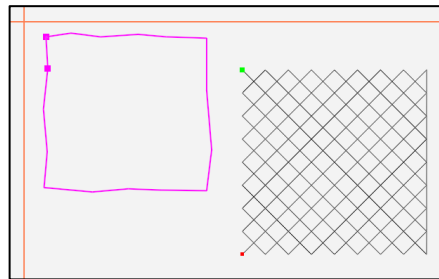
- Move machine to top left corner of the quilt block.
- Press **Multi-Point**.



- Continue moving the machine and pressing **Multi-Point** every inch or two along the seam lines to define the irregular block. This area has 16 points around the block.

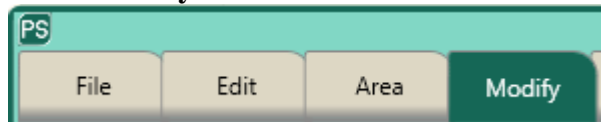


- The area now appears as a pink box.
- Press **Refresh** in the status bar. The area, design and crosshairs will be visible in the workspace.



3. Skew to the Area.

- Select **Modify** tab.



- Press **Skew**.
- Press **Skew 2** in the sidebar on the right side of the screen.



- The design will resize, skew and reposition within the area box.

